

INSTALLATION INSTRUCTIONS
 Kit 220A, Part No. 138847
 Microphone Kit for use with
 Model 3500, 3600, 3700, 7500 and 7500A Series Phonographs

PARTS LIST

| | | | |
|------------|--------------------------------------|--------------|-------------------------|
| 1 - 138961 | Control Case Assembly | 1 - 73804-4 | Cable Clamp |
| 1 - 138913 | Mounting Plate | 1 - 74443-8 | Screw, 6 x 1/2, TRUSS Z |
| 1 - 132124 | Microphone and Connector Assembly | 1 - 73503-78 | Screw, 6-32 x 1 3/4 RD. |
| 1 - 137010 | Electronic Switch Assembly | 1 - 73503-76 | Screw, 6-32 x 1 1/4 RD. |
| 1 - 140922 | Cable, Terminal and Plug Assembly | 4 - 73531-8 | Screw, 6 x 1/2, RD. Z |
| | | 2 - 73592-7 | Screw, 6 x 3/8, RD. A |
| | | 1 - 73908-19 | Speed Clip |

1. Install necessary length of three-conductor cable, having one conductor shielded, such as Belden Cable, Number 8734, from Phonograph to Control Case Assembly location. Staple cable every eighteen inches and at all corners. Also protect from damage where cable passes through walls or floors. Leave enough slack in cable, at Phonograph, to permit easy access for servicing and/or cleaning.
2. Remove Service Door from Phonograph.
3. Disconnect red receptacle from A.C. INPUT plug located on Amplifier. Refer to Figure 1 for receptacle and plug location.
4. Remove two screws securing Cover and Silk Screen Assembly to Amplifier (located at upper center of Amplifier). Retain screws for reuse.
5. Pass wires of ELECTRONIC SWITCH ASSEMBLY, Part No. 137010, shown in Figure 1, through opening in chassis pan in Amplifier.
6. Position ELECTRONIC SWITCH ASSEMBLY as shown in Figure 1. Secure ELECTRONIC SWITCH ASSEMBLY to Amplifier using two screws removed in Step 4.

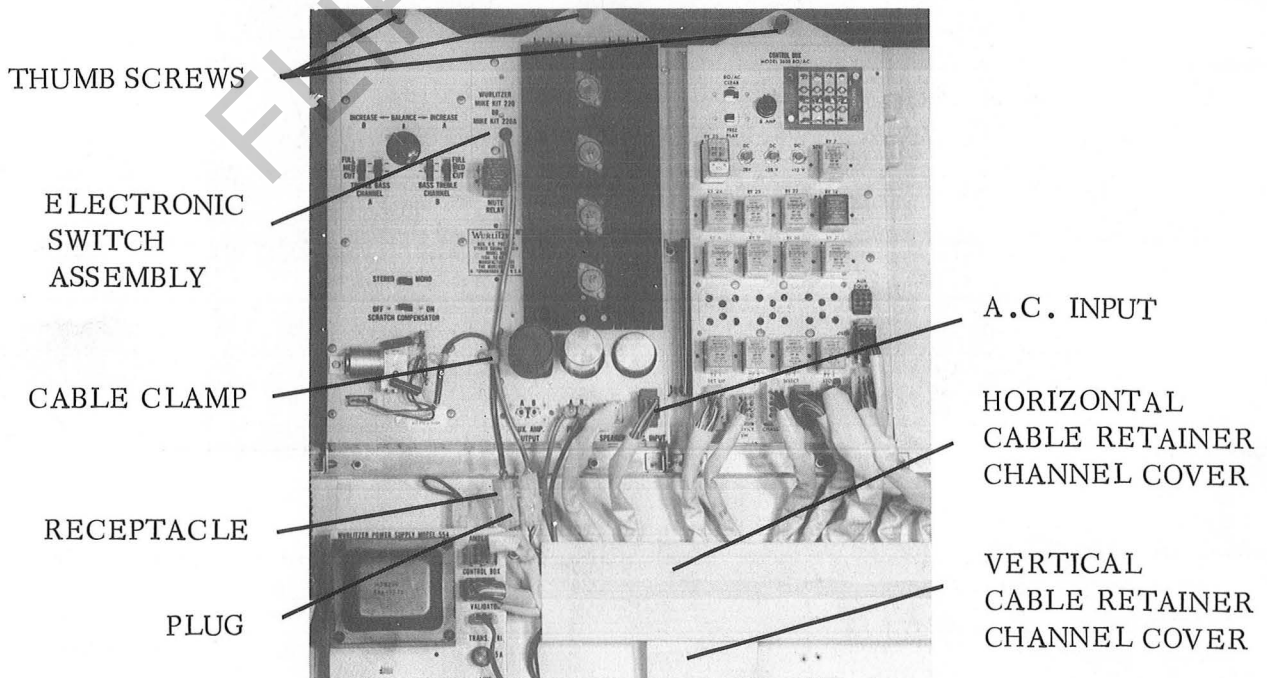


Figure 1.

7. Loosen two THUMB SCREWS shown in Figure 1, Swing Amplifier to down position.
8. Connect ELECTRONIC SWITCH ASSEMBLY in Model 551 or 553 Amplifier as follows:
 - a. Connect and solder ORANGE wire to printed board as shown in Figure 2.
 - b. Connect and solder two WHITE wires to printed board as shown in Figure 2.
 - c. Connect and solder BLACK wire to printed board as shown in Figure 2.
 - d. Connect and solder BLUE wire to CAPACITOR C-25 as shown in Figure 3.

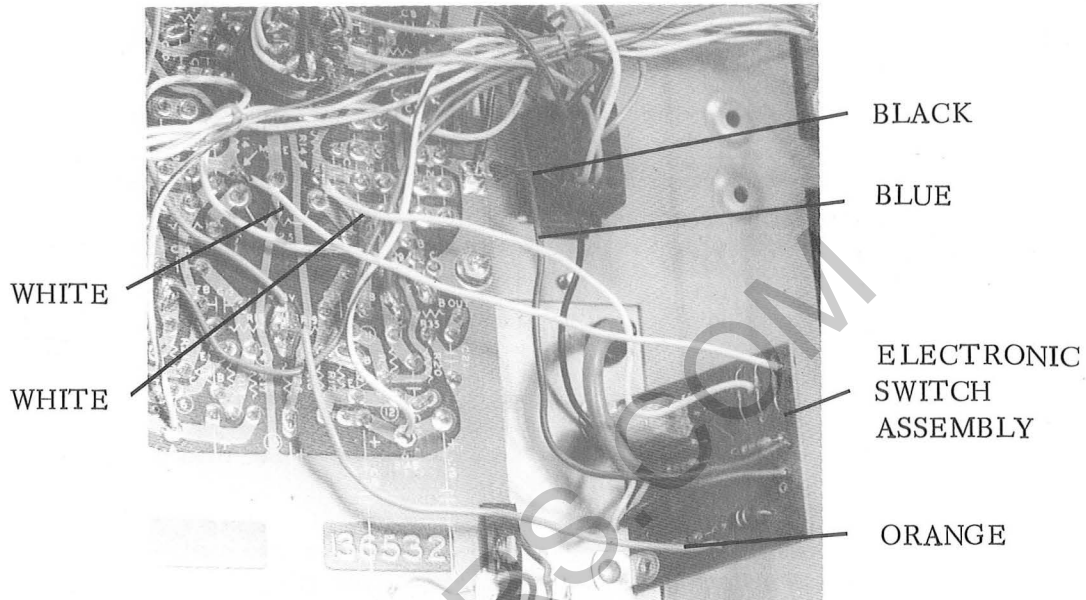


Figure 2.

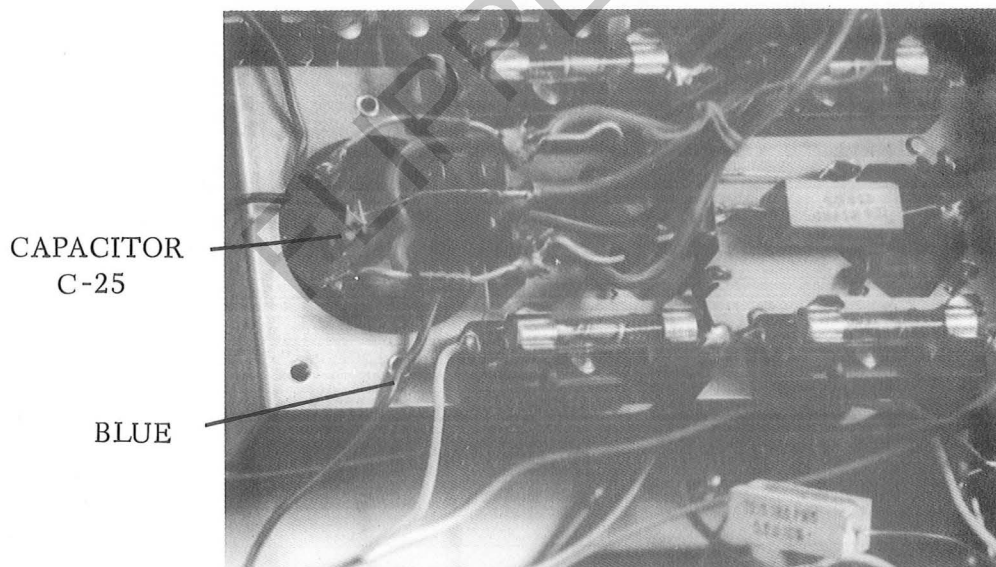


Figure 3.

9. Connect ELECTRONIC SWITCH ASSEMBLY in Model 556 Amplifier as follows:
 - a. Connect and solder ORANGE wire to printed board as shown in Figure 4.
 - b. Connect and solder two WHITE wires to printed board as shown in Figure 4.
 - c. Connect and solder BLACK wire to printed board as shown in Figure 4.
 - d. Connect and solder BLUE wire to CAPACITOR C-25 as shown in Figure 5.

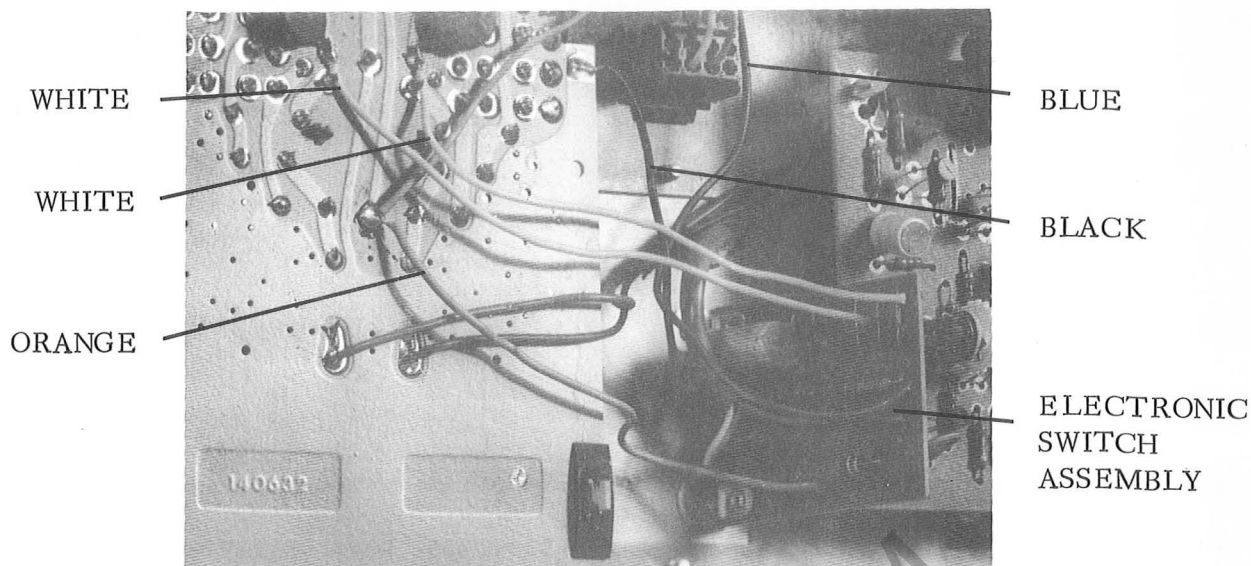


Figure 4.

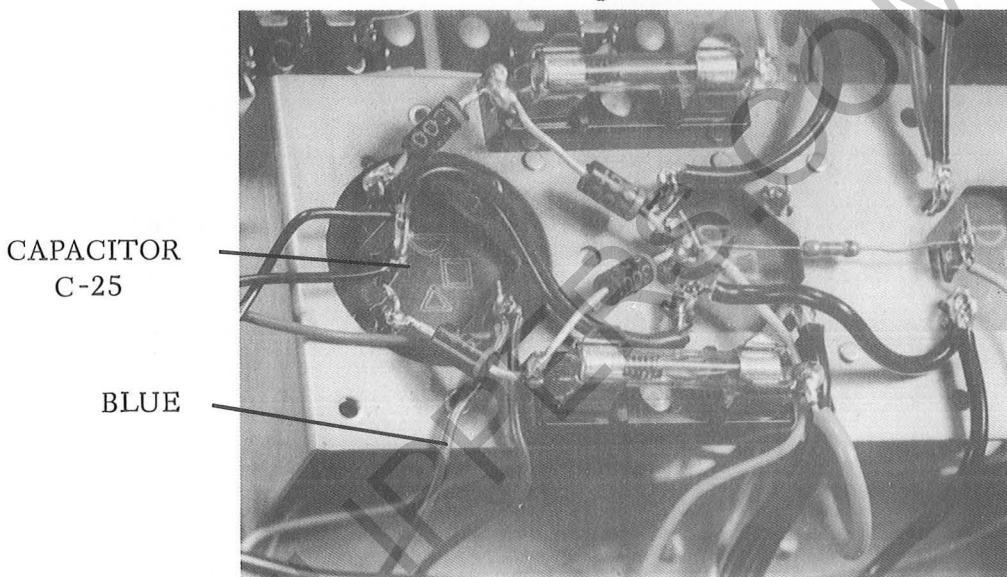


Figure 5.

10. Return Amplifier to normal operating position. Secure THUMB SCREWS.
11. Install CABLE CLAMP, Part No. 73804-4, on cable of ELECTRONIC SWITCH ASSEMBLY and secure to Amplifier with Screw, Part No. 74443-8, as shown in Figure 1. Tighten Screw securely.

NOTE: Steps 13 through 17 apply to 3600 and 3700 Series Phonographs only. If Kit 220A is being installed in Model 7500 or 7500A Phonograph, proceed to Step 18.

12. Remove and retain two Wing Nuts securing Record Changer and pull Record Changer forward.
13. Remove and retain VERTICAL CABLE RETAINER CHANNEL COVER shown in Figure 1.
14. Loosen left hand end of HORIZONTAL CABLE RETAINER CHANNEL COVER shown in Figure 1.

15. Dress Cable, Terminal and Plug Assembly in HORIZONTAL and VERTICAL CABLE RETAINER CHANNELS.
16. Secure left hand end of HORIZONTAL CABLE RETAINER CHANNEL COVER, then reinstall VERTICAL CABLE RETAINER CHANNEL COVER as shown in Figure 1.
17. Remove and retain Accessory Terminal Panel Cover located on rear of Phonograph.
18. Install CABLE, TERMINAL and PLUG ASSEMBLY TERMINAL STRIP on ACCESSORY TERMINAL PANEL, as shown in Figure 6, using four Screws, Part No. 73531-8.
19. Install SPEED CLIP, Part No. 73908-19, as shown in Figure 6.

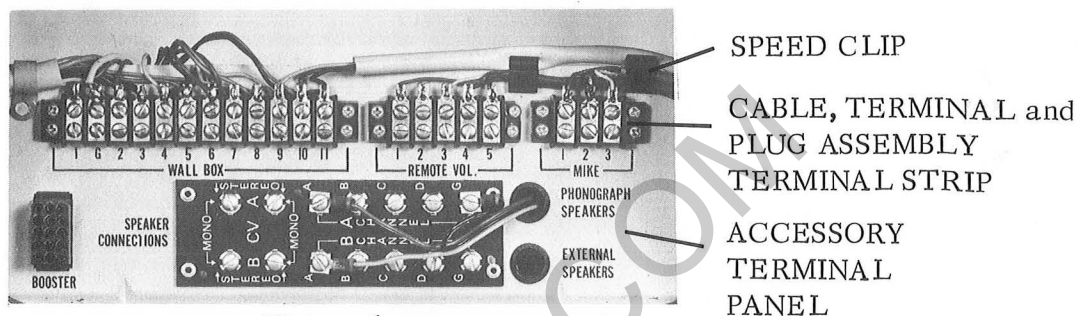


Figure 6.

20. Position and secure MOUNTING PLATE, Part No. 138913, at control station location using two Screws, Part No. 73592-7.
21. Connect three conductors and shield, of three-conductor cable installed in Step 1, to TERMINAL STRIP of CONTROL CASE ASSEMBLY, Part No. 138691, shown in Figure 7, as follows:
 - Terminal 1 - Red
 - Terminal 2 - Black and Shield
 - Terminal 3 - White
22. Position and secure CONTROL CASE ASSEMBLY to MOUNTING PLATE, at Control Station Location, using two Screws, Part Nos. 73503-76 and 73508-78.

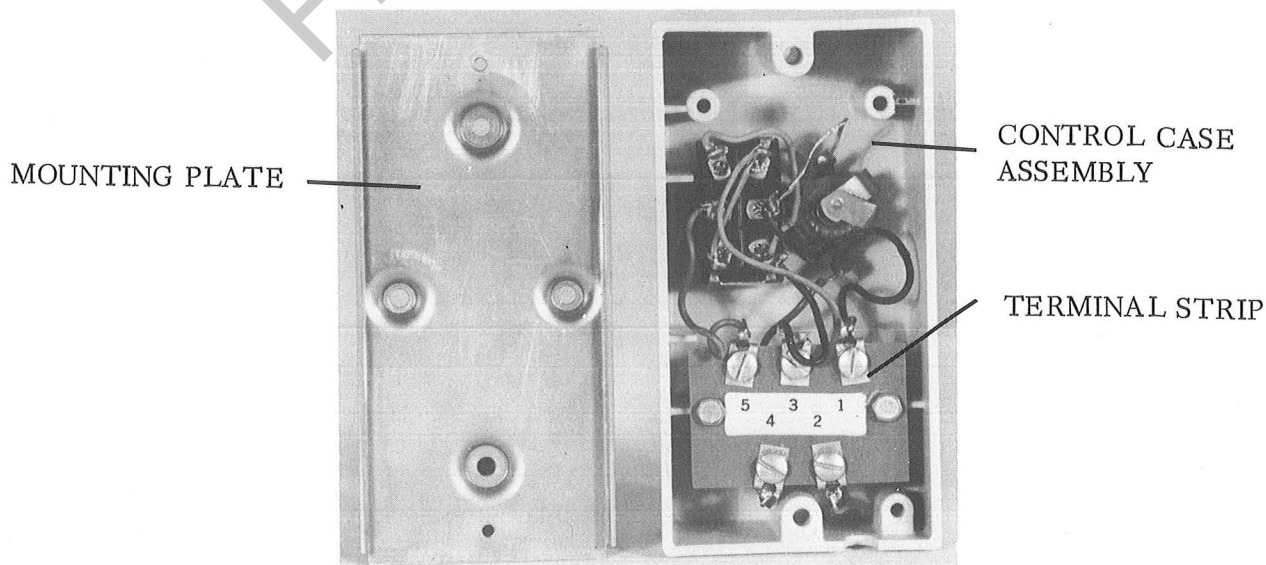
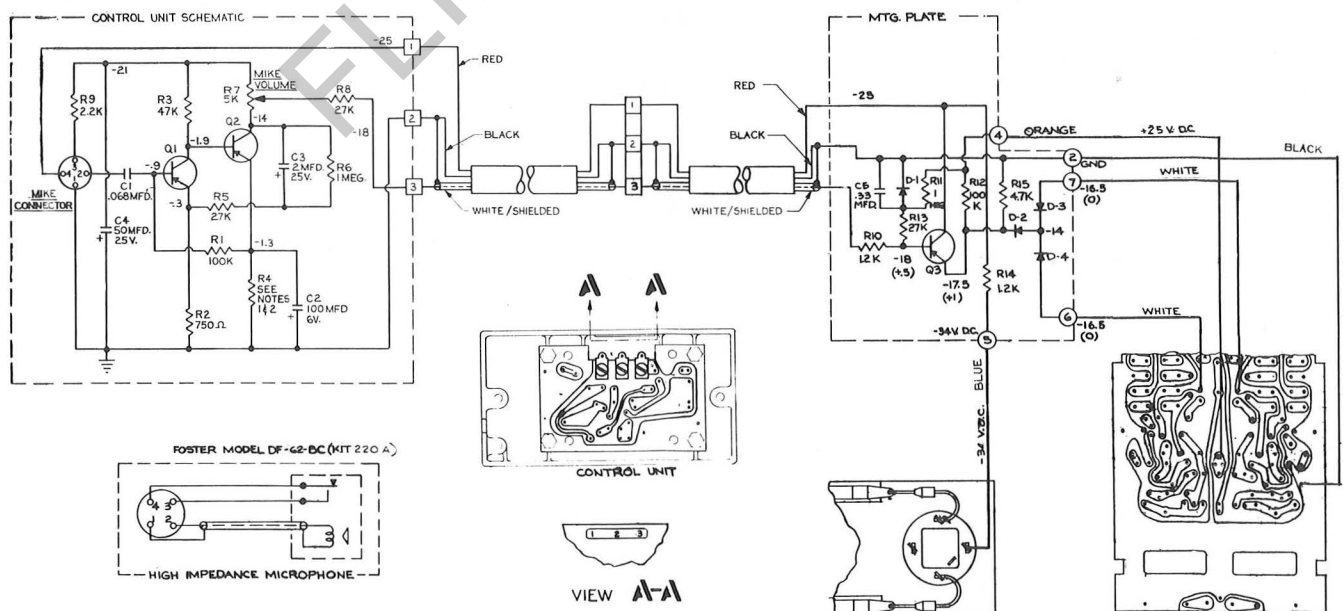


Figure 7.

23. Install remaining end of three-conductor cable through cable entrance provided at lower rear of Phonograph (below and to right of Accessory Terminal Panel).
24. Connect the three conductors and shield of three-conductor cable, to CABLE, TERMINAL and PLUG ASSEMBLY TERMINAL STRIP on ACCESSORY TERMINAL PANEL as shown in Figure 6. Utilize same color code employed in Step 21.
25. Reinstall Accessory Terminal Panel Cover.
26. Secure Cable Retainer at Phonograph cable entrance. Leave enough slack to provide service accessibility.
27. Return Record Changer to normal operating position and reinstall two Wing Nuts removed in Step 12.
28. Reinstall Service Door. Be sure to reconnect Fluorescent Lamp and Speaker Plugs.
29. Connect red receptacle, removed in Step 3, to A.C. INPUT plug as shown in Figure 1.
30. Connect Microphone and Connector Assembly, Part No. 132134, to Control Case Assembly Receptacle provided for this purpose.
31. Set MIKE VOLUME control, located on the Control Case Assembly, at approximately the 9 o'clock position. Position Microphone ON-OFF Switch to ON and test paging system by talking into Microphone. Adjust MIKE VOLUME control as necessary to obtain desired audio level.
32. Make a selection at the Phonograph and test paging system while the selection is playing. Music should cut back to an unobtrusive level when the Microphone is in use. Should excessive feedback occur, from Phonograph to Microphone, moving the Microphone and/or adjusting MIKE VOLUME control to a lower audio level should correct the difficulty.
33. Two or three additional Control Case Assemblies with a like number of Microphone and Connector Assemblies may be paralleled to provide the facility for originating announcements from more than one location.



FLIPPERS.COM