

INSTALLATION INSTRUCTIONS  
 READOUT CIRCUIT MODIFICATION PACKET, PART NO. 137334

List of Materials

2 - 77377	Resistor, 125 ohm, 10 W	2 - 73601-7	Nut
1 - 137300	Insulator	12" - 75004-9	Wire
2 - 74850-98	Screw	1 - 137337	Installation Instructions

To install Modification Packet, Part No. 137334, proceed as follows:

1. Disconnect and remove Control Unit from Phonograph.
2. Layout holes to be drilled as shown in Figure 1.
3. Using a Number 18 Drill Bit, drill two holes.
4. Remove burrs from drilled holes.
5. Place Insulator (Item 3, Figure 2), Part No. 137300, in Chassis and Socket Assembly as shown in Figure 2.
6. Install Screws, Part No. 74850-98, in Resistors, Part No. 77377.
7. Install Resistors with Screws through Insulator (Item 3, Figure 2) and holes in Chassis and Socket Assembly as shown in Figure 2.
8. Install Nuts, Part No. 73601-7, on Screws and tighten nuts until snug.
9. Cut Wire, Part No. 75004-9, into four 3" pieces. Strip and tin ends of wires.
10. Connect one 3" piece of wire (Item 1, Figure 2) between top lug of Resistor (Item 2, Figure 2) and Contacts 9 and 13 of SIDE 1 RLY Socket as shown in Figure 2.
11. Connect one 3" piece of wire (Item 4, Figure 2) between bottom lug of Resistor (Item 2, Figure 2) and Contact 14 of SIDE 1 RLY Socket as shown in Figure 2.
12. Connect one 3" piece of wire (Item 7, Figure 2) between top lug of Resistor (Item 5, Figure 2) and Contacts 9 and 13 of SIDE 2 RLY as shown in Figure 2.
13. Connect remaining 3" piece of wire (Item 6, Figure 2) between bottom lug of Resistor (Item 5, Figure 2) and Contact 14 of SIDE 2 RLY as shown in Figure 2.
14. Solder all connections.
15. Reinstall and reconnect Control Unit in Phonograph.
16. Check Phonograph for proper operation.

NOTE

It is suggested that after Phonograph has been checked for proper operation, that a minimum of six even number and six odd number selections be made and selection cycle be verified utilizing RECORD NOW PLAYING indicator.

17. Verify SIDE 1 and SIDE 2 READOUT SWITCH adjustment per Wurlitzer 3400 Series, Phonograph Service Manual, Pages 8 C and 9 C.

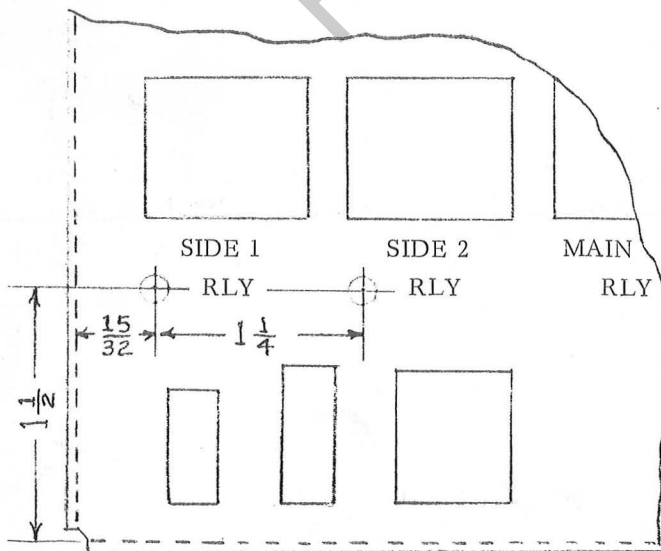


FIGURE 1 - HOLE LAYOUT

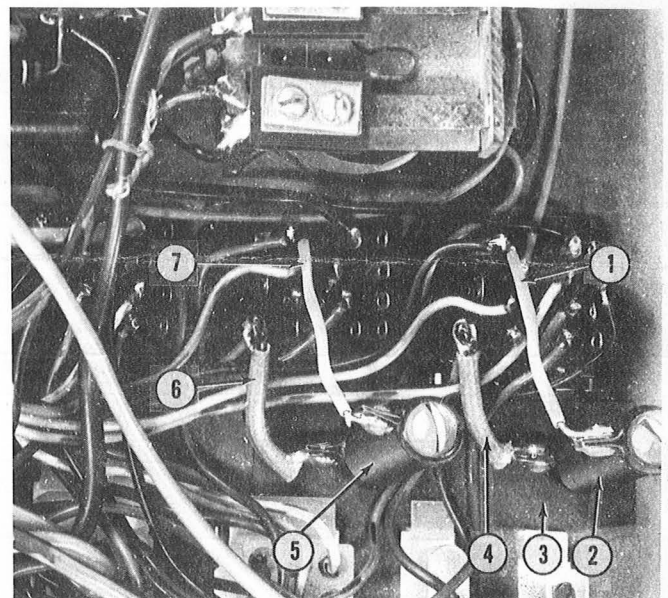


FIGURE 2.