



WURLITZER SERVICE SLANTS

YOUR QUESTIONS OR COMMENTS ON "SERVICE SLANTS"
ARE WELCOME AT ANY TIME

WURLITZER SERVICE DEPT., NORTH TONAWANDA, N. Y.

SUBJECT: Modification of Control Unit wiring to correct Readout Switch circuitry .
COMPLAINT: Phonographs intermittently playing incorrect selections .
CAUSE: High Resistance in Readout Switches resulting in Readout Switch contact contamination .
CORRECTION: To correct above complaint, if apparent, perform the following:

Materials Required

2 - 77377	Resistor, 125 ohm, 10 W
1 - 137300	Insulator
2 - 74850-98	Screw
2 - 73601-7	Nut
12"-75004-9	Wire

NOTE: The above materials may be ordered from The Wurlitzer Company under Part No. 137334, Readout Circuit Modification Packet.

1. Disconnect and remove Control Unit from Phonograph .
2. Layout holes to be drilled as shown in Figure 1 .
3. Using a Number 18 Drill Bit, drill two holes .
4. Remove burrs from drilled holes .
5. Place Insulator (Item 3, Figure 2), Part No. 137300, in Chassis and Socket Assembly as shown in Figure 2 .
6. Install Screws, Part No. 74850-98, in Resistors, Part No. 77377 .
7. Install Resistors with Screws through Insulator (Item 3, Figure 2) and holes in Chassis and Socket Assembly as shown in Figure 2 .
8. Install Nuts, Part No. 73601-7, on Screws and tighten nuts until snug .
9. Cut Wire, Part No. 75004-9, into four 3" pieces . Strip and tin ends of wires .
10. Connect one 3" piece of wire (Item 1, Figure 2) between top lug of Resistor (Item 2, Figure 2) and Contacts 9 and 13 of SIDE 1 RLY Socket as shown in Figure 2 .
11. Connect one 3" piece of wire (Item 4, Figure 2) between bottom lug of Resistor (Item 2, Figure 2) and Contact 14 of SIDE 1 RLY Socket as shown in Figure 2 .
12. Connect one 3" piece of wire (Item 7, Figure 2) between top lug of Resistor (Item 5, Figure 2) and Contacts 9 and 13 of SIDE 2 RLY as shown in Figure 2 .
13. Connect remaining 3" piece of wire (Item 6, Figure 2) between bottom lug of Resistor (Item 5, Figure 2) and Contact 14 of SIDE 2 RLY as shown in Figure 2 .
14. Solder all connections .

15. Reinstall and reconnect Control Unit in Phonograph .
16. Check Phonograph for proper operation .

NOTE

It is suggested that after Phonograph has been checked for proper operation, that a minimum of six even number and six odd number selections be made and selection cycle be verified utilizing RECORD NOW PLAYING indicator .

17. Verify SIDE 1 and SIDE 2 READOUT SWITCH adjustment per Wurlitzer 3400 Series, Phonograph Service Manual, Pages 8 C and 9 C .

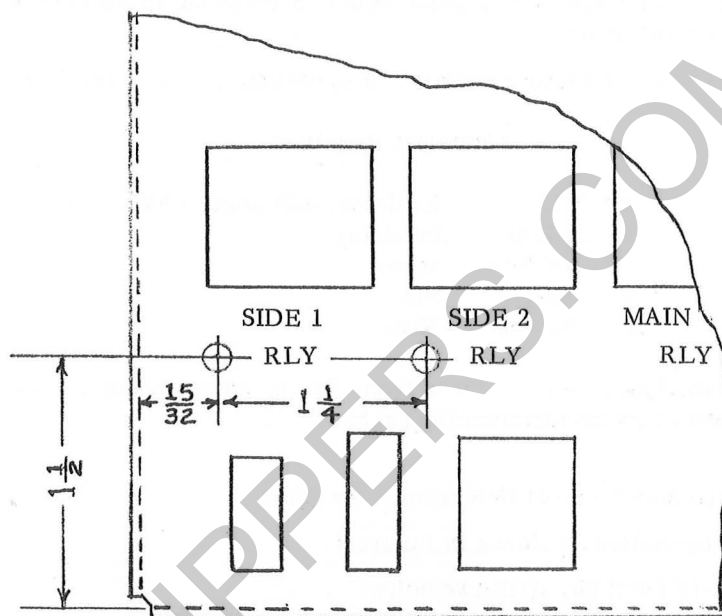


FIGURE 1 - HOLE LAYOUT

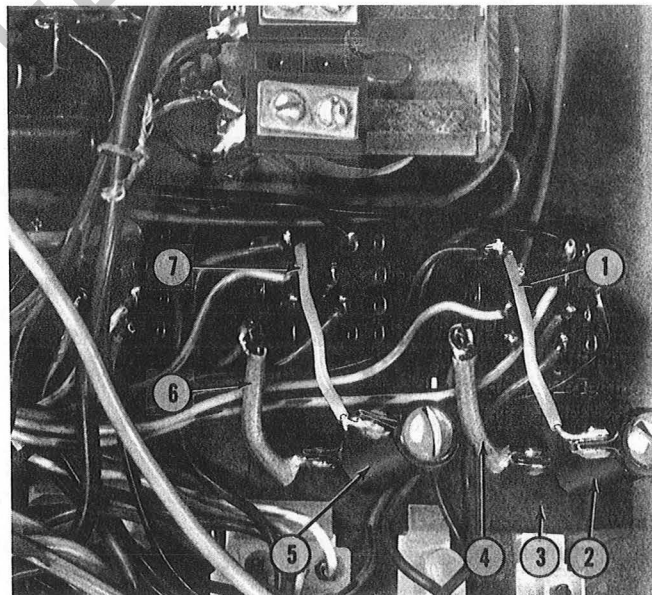


FIGURE 2 .