



SERVICE SLANTS

YOUR QUESTIONS OR COMMENTS ON "SERVICE SLANTS"
ARE WELCOME AT ANY TIME

ISSUED BY WURLITZER SERVICE DEPT., NORTH TONAWANDA, N. Y.

INSTRUCTIONS FOR ADDING TURNTABLE STABILIZER ARM TO MODEL 1015, 1017 or 1080.

Parts required: 1 - #49984, upper turntable & bearing assembly.

1 - #49993, nut, special

(Not furnished in kit form; order item as required.)

1. Unhook 24 tray return springs. Remove acorn nut and lockwasher, shoulder screw, and round head screw, and lift off record tray cover. Discard acorn nut.
2. Drill one hole using a $\frac{1}{4}$ inch (.250) drill, in the top of the record tray cover to the dimensions shown in the drawing on the reverse of this page. Drawing is to scale and may be used as a template if desired. Remove burrs formed during drilling operation.
3. Replace record tray cover, and re-install round head screw and shoulder screw. Place stabilizer arm (#49984, upper turntable & bearing assembly) in position, with guide stud at rear of arm in hole drilled, (step 2). Install #49993 special nut, with lockwasher which was removed in step 1, through hole in stabilizer arm and screw firmly on to threaded end of shaft. Base of nut will fit into hole in record tray cover when properly installed. Replace 24 record tray return springs.
4. Make a selection on the phonograph, and unplug the motor plug from the junction box, just as the turntable rises, so as to halt the changer cycle at the point where the tip of the turntable shaft is just about to enter the bearing in the stabilizer arm. It may be necessary to rotate the drive motor shaft by hand, at the flexible coupling assembly, to bring the point of the turntable shaft to the correct position. Loosen the two round head screws in the top of the stabilizer arm and position the spring and bearing assembly so that the point of the turntable shaft will be properly centered when seated in the bearing. Tighten screws. Plug in the motor plug, and allow changer to continue cycle to the point where the turntable is in playing position, and again unplug motor.
5. Adjust eccentric shoulder screw on turntable lift arm and bearing assembly, so that there is $\frac{3}{32}$ inch to $\frac{1}{8}$ inch clearance between the lower edge of the stabilizer arm and the top surface of the record. Refer to page 41, Adjustments Section, Service Handbook for Model 1100 Phonograph. After making the above adjustment of turntable height, it may be necessary to readjust the tone arm latch, the tone arm latch pin, and the tone arm height. A full description of these adjustments is given on page 26, Adjustments Section III, Service Handbook for Model 1015 Wurlitzer Phonograph.

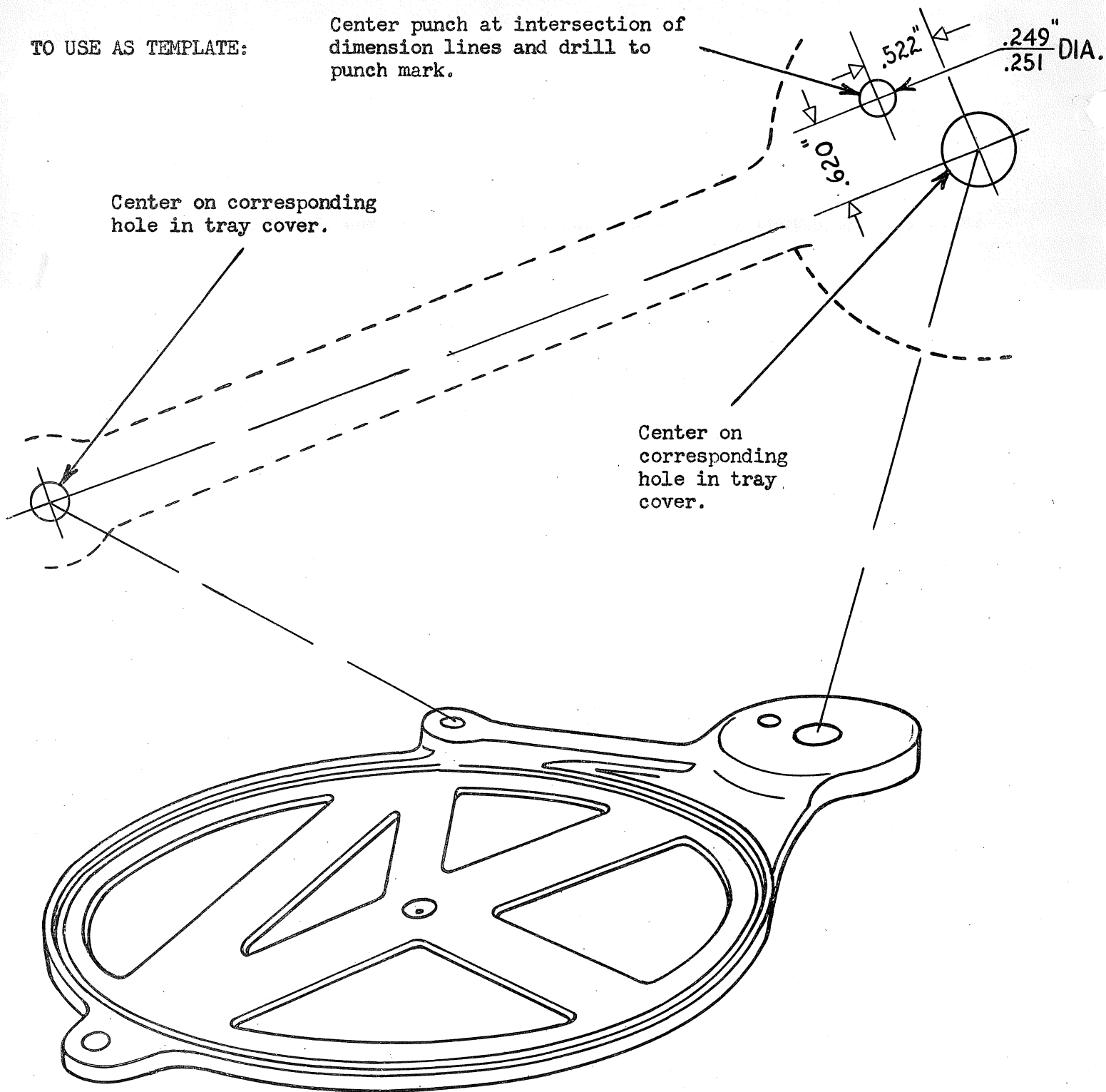
Plug in motor, and cycle mechanism several times, checking: proper centering of turntable shaft point in stabilizer arm bearing; proper clearance between record and lower edge of stabilizer arm; proper latching, latch pin clearance height, and starting position of tone arm.

TO USE AS TEMPLATE:

Center punch at intersection of dimension lines and drill to punch mark.

Center on corresponding hole in tray cover.

Center on corresponding hole in tray cover.



NOTE: Record Tray Cover, Part No. 27245, as installed on Models 1017-A, 1080-A and 1100 Phonographs, has a hole to accommodate the locating stud on the stabilizer arm. A few Model 1015, 1017 and 1080 Phonographs will be encountered on which this tray cover, with the hole already drilled, has been used. In such cases, drilling of the cover will not be required.

Under circumstances where it is undesirable, through lack of facilities or for other reasons, to drill the tray cover a new Record Tray Cover, Part No. 27245 may be ordered and installed. This tray will come to you with the locating hole for the stabilizer arm stud.

The same precautions as to adjustments and checking should be followed in either case.